



Air Conditioning

Parts catalog



SCROLL COMPRESSORS SANYO-PANASONIC | C-SB SERIES

FEATURES:

- › Low noise
- › Direct break of electricity for motor protecting
- › PPS tip seal improve the sealing performance and efficiency
- › High reliability

TEST CONDITIONS:

- › Condensing temperature 54.4 C
- › Evaporating temperature 7.2 C
- › Sub Cooling 8.3K
- › Superheat 11.1K

| Part No. | Ref. | Output (Btu/h) | Disp. (Cm3/rev) | Power | Starting Method | Capacitor Specs | | Capacity | | COP | |
|--------------|--------|----------------|-----------------|--------------|-----------------|-----------------|---------------|----------|--------|------|--------|
| | | | | | | Run (mfd/v) | Start (mfd/v) | KW | Kbtu/h | W/W | Btu/wh |
| C-SBR120H16A | R-22 | 38200 | 51.8 | 208-230/1/60 | PSC | | | 12.1 | 41.3 | 3.23 | 11 |
| C-SBR165H16A | | 57400 | 77.4 | 208-230/1/60 | PSC | | | 16.8 | 57.4 | 3.2 | 10.9 |
| C-SBP120H16A | R-410a | 41000 | 39.6 | 208-230/1/60 | PSC | | | 12.1 | 41.3 | 2.81 | 9.6 |
| C-SBP170H16Y | | 59400 | 54.8 | 208-230/1/60 | CSR | | | 16.9 | 57.7 | 2.83 | 9.7 |

Panasonic

SCROLL COMPRESSORS COPELAND ZR SERIES

| Part No. | Ref. | HP | Freq.(HZ) | Phase (PH) | Displacement (m³/h) | Air Working Condition (7.2°C/54.4°C) | | Welding Dimension | |
|-----------------|------|------|--------------|------------|---------------------|--------------------------------------|---------------|-------------------|---------|
| | | | | | | Run (mfd/v) | Start (mfd/v) | Exhaust | Suction |
| ZR57KC-TFD-522 | R22 | 4,75 | 380-420/460V | 3 | 13,43 | 13900 | 4319 | 1/2 " | 7/8 " |
| ZR72KC-TFD-522 | | 6 | 380-420/460V | 3 | 17,06 | 17700 | 5200 | 1/2 " | 7/8 " |
| ZR94KC-TFD-522 | | 8 | 380-420/460V | 3 | 22,14 | 22940 | 7000 | 7/8 " | 1-1/8 " |
| ZR125KC-TFD-522 | | 10 | 380-420/460V | 3 | 28,77 | 30470 | 9060 | 7/8 " | 1-3/8 " |
| ZR144KC-TFD-522 | | 12 | 380-420/460V | 3 | 33,22 | 34730 | 10320 | 7/8 " | 1-3/8 " |

Copeland
brand products



ROTARY COMPRESSORS GREE

FEATURES:

- › High reliability. They can run steadily in a wide range condition with unique refrigeration oil and protective devices.
- › High energy efficiency. The COP can reach over 3 under ASHRAE working conditions.
- › Long service life and low failure rate.

TEST CONDITIONS:

- › Condensing temperature 54.4 C
- › Evaporating temperature 7.2 C
- › Supercooling Degree Temp. 8.3 °C
- › Suction Temperature 35.0 °C
- › Ambient Temperature 35.0 °C



| Model | Displ. (cc) | Capacity (Btu/h) | Refrigerating Capacity (W) | Power (W) | COP (W/W) | Capacitor (µF) | Power Supply | Compressor Height (mm) | Dispatch pipe ID (mm) | Suction Pipe ID (mm) | Refrigerant |
|---------------|-------------|------------------|----------------------------|-----------|-----------|----------------|-------------------|------------------------|-----------------------|----------------------|-------------|
| R22 | | | | | | | | | | | |
| QX-B172RC030 | 17.2 | 9884 | 2897 | 920 | 3.15 | 35µF/450V | 208-230V/1Ph/60Hz | 273.0 | 9.7 | 12.2 | R22 |
| QX- D53RF050A | 25.3 | 17888 | 5243 | 1616 | 3.24 | 35µF/450V | 208-230V/1Ph/60Hz | 300.5 | 9.7 | 12.2 | R22 |
| QX-F305RF050 | 30.6 | 22691 | 6650 | 1992 | 3.34 | 45µF/450V | 208-230V/1Ph/60Hz | 326.5 | 9.7 | 16.2 | R22 |

| | | | | | | | | | | | |
|----------------|------|-------|------|------|------|-----------|-------------------|-------|-----|------|-------|
| R410A | | | | | | | | | | | |
| QXA-B117RT130A | 11.7 | 11624 | 3407 | 1117 | 3.05 | 35µF/450V | 208-230V/1Ph/60Hz | 266.5 | 9.7 | 12.2 | R410A |
| QXA-D17RE050 | 17.0 | 17285 | 5066 | 1634 | 3.10 | 35µF/450V | 208-230V/1Ph/60Hz | 307.5 | 9.7 | 16.2 | R410A |
| QXA-E23RH050 | 23.2 | 24536 | 7191 | 2305 | 3.12 | 65µF/450V | 208-230V/1Ph/60Hz | 331.5 | 9.7 | 16.2 | R410A |

| | | | | | | | | | | | |
|-----------------|--------|-------|------|------|------|-----------|-------------------|-----|-----|------|-----|
| R22 50Hz | | | | | | | | | | | |
| QX-B160T130 | 16 | 10219 | 2995 | 776 | 3.86 | 35µF/450V | 220-240V/1PH/50Hz | 295 | 8.2 | 9.7 | R22 |
| QX-B217C130C | 21.7 | 13921 | 4080 | 1088 | 3.75 | 45µF/450V | 220-240V/1PH/50Hz | 319 | 9.7 | 12.2 | R22 |
| QX-D305F030B | 30.5 | 17913 | 5250 | 1630 | 4.33 | 50µF/450V | 220-240V/1PH/50Hz | 337 | 9.7 | 16.2 | R22 |
| QX-37F050gA | 36.832 | 21325 | 6250 | 2030 | 3.08 | 60µF/450V | 220-240V/1PH/50Hz | 367 | 9.7 | 16.2 | R22 |

| | | | | | | | | | | | |
|-------------------|------|-------|------|------|------|-----------|-------------------|-------|-----|------|-------|
| R410A 50Hz | | | | | | | | | | | |
| QXA-B106T130A | 10.6 | 8939 | 2620 | 910 | 3.1 | 35µF/450V | 220-240V/1PH/50Hz | 274 | 8.2 | 9.7 | R410A |
| QXA-B139T130A | 13.9 | 12044 | 3530 | 1250 | 3.05 | 45µF/450V | 220-240V/1PH/50Hz | 288.5 | 9.7 | 12.2 | R410A |
| QXA-D19F030DB | 19 | 15545 | 4556 | 1521 | 3.1 | 45µF/450V | 220-240V/1PH/50Hz | 336.5 | 9.7 | 12.2 | R410A |
| QXAH-E265H050 | 26.5 | 22519 | 6600 | 2180 | 3.2 | 60µF/450V | 220-240V/1PH/50Hz | 377 | 9.7 | 16.2 | R410A |

AIR-CONDITIONING CONDENSER FAN MOTORS

FEATURES:

- › UL Certified
- › High Efficiency
- › Class B Insulation
- › Quiet Operation
- › Reversible Rotation
- › Automatic Reset Thermal Overload Protector
- › Continuous Air Over
- › Totally enclosed

| Part No. | HP | Power | RPM | Watts | Capacitor (mfd/μ) | Bearing | Speeds |
|----------|-----|-------------------|------|-------|-------------------|---------|--------|
| YS1860 | 1/4 | 208-230/1/6050/60 | 1075 | 1.5A | 5X450 | Ball | 1 |
| YS1861 | 1/3 | 208-230/1/6050/60 | 1075 | 2.4A | 7.5X450 | Ball | 1 |
| YS1862 | 1/2 | 208-230/1/6050/60 | 1075 | 3.8A | 10X450 | Ball | 1 |
| YS1868 | 3/4 | 208-230/1/6050/60 | 1075 | 4.7A | 15X450 | Ball | 1 |



AIR-CONDITIONING BLOWER MOTORS

FEATURES:

- › UL Certified
- › High Efficiency
- › Class B Insulation
- › Quiet Operation
- › Reversible Rotation
- › All angle mounting
- › Automatic Reset Thermal Overload Protector
- › Continuous Air Over
- › Open frame

| Part No. | HP | Power | RPM | Watts | Capacitor (mfd/V) | Bearing | Speeds |
|----------|-----|-------------------|------|-------|-------------------|---------|--------|
| YS1971 | 1/4 | 208-230/1/6050/60 | 1075 | 1.5A | 5X450 | Ball | 3 |
| YS1972 | 1/3 | 208-230/1/6050/60 | 1075 | 2.4A | 7.5X450 | Ball | 3 |
| YS1973 | 1/2 | 208-230/1/6050/60 | 1075 | 3.8A | 10X450 | Ball | 3 |
| YS8905 | 3/4 | 208-230/1/6050/60 | 1075 | 4.7A | 15X450 | Ball | 3 |





6N1RSD

6'N'1 RATCHET
SCREWDRIVERS



QAL3SM-5

2-V BRASS MANIFOLD WITH
3FT. SOFT MAGIC R134A/
R404A/R22



QS4L3H-5

2-V BRASS MANIFOLD WITH
3FT. SOFT MAGIC R410A/
R404A/R22



42005

VACUUM PUMP OIL QUART



42006

VACUUM PUMP OIL GALLON



91861

COOL BLUE HEAT SINK PASTE



20N1RSD

20'N'1 RATCHET
SCREWDRIVERS



QAL5SM-5

2-V BRASS MANIFOLD WITH
5FT. SOFT MAGIC R134A/
R404A/R22



QS4L5H-5

2-V BRASS MANIFOLD WITH
5FT. SOFT MAGIC R410A/
R404A/R22



QS8N3SM-5

2-V BRASS MANIFOLD WITH
3FT. SOFT MAGIC R410A/
R404A/R22/R134A



G29LD-5

GAUGE HIGH PRESSURE
(RED) R134A/R404A/R22 -
QAL3SM-5 Y QAL5SM-5



G30LD-5

GAUGE LOW PRESSURE
(BLUE) R134A/R404A/R22 -
QAL3SM-5 Y QAL5SM-5



HC3SMB

HOSES SOFT MAGIC 3FT.



QS8N5SM-5

2-V BRASS MANIFOLD WITH
5FT. SOFT MAGIC R410A/
R404A/R22/R134A



UVG2

VACUUM GAUGE
SMARTECH



KLT71-4P-T

PREMIUM PORTABLE OUTFIT



RTB118

RATCHET TUBE BENDER 3/8"
TO 1-1/8"



USMAN5

DIGITAL MANIFOLD
SMARTECH



P4KD9

ALUMINUM SOLDER 10FT. COIL WITH A 1 OZ. FLUX BOTTLE



UTC702

TUBING CUTTER FOR COPPER, BRASS AND ALUMINUM TUBING 1/8" TO 1-1/8"



UTC706

REPLACEMENT PARTS FOR UTC701, UTC702, UTC703, UTC704, UTC705



EZ3HS

HOSES EZ TURN 3FT.



G429ND-5

GAUGE HIGH PRESSURE (RED) R134A/R404A/R22/ R410A - QS8N3SM-5 Y QS8N5SM-5



G430ND-5

GAUGE LOW PRESSURE (BLUE) R134A/R404A/R22/ R410A - QS8N3SM-5 Y QS8N5SM-5



G529LD-5

GAUGE HIGH PRESSURE (RED) R410A/R404A/R22 - QS4L3H-5 Y QS4L5H-5



G530LD-5

GAUGE LOW PRESSURE (BLUE) R410A/R404A/R22 - QS4L3H-5 Y QS4L5H-5



P4KD9S

ALUMINUM SOLDER 10FT. COIL WITH A 1 OZ. FLUX BOTTLE & METAL TIP FLUX APPLICATOR



RP3T2

HAND TORCH UT2 DOUBLE TWISTER TIP



RP3T5

HAND TORCH UT5 TWISTER TIP



RHP800

NITROGEN REGULATOR
0-800 PSIG



UTC703

TUBING CUTTER FOR
COPPER, BRASS AND
ALUMINUM TUBING 1/8" TO
1-3/8"



EZ5HS

HOSES EZ TURN 5FT.



70015

3-IN-1 TRIPLE TUBE BENDER
1/4", 5/16", 3/8" O.D.



HC5SMB

HOSES SOFT MAGIC 5FT.



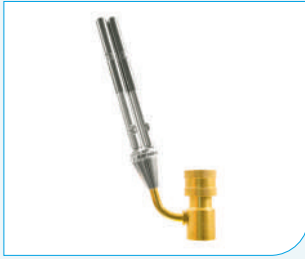
MTF-5

CAP'N HOOK TIP 5 FLAMES



RHP400

NITROGEN REGULATOR
0-400 PSIG



RP3T3

HAND TORCH UT3 TRIPLE
TWISTER TIP



U5VP2

VACUUM PUMP 5.5 CFM
110V/220V



NV1

NITROGEN FLOW INDICATOR



HVP6

VACUUM PUMP 6 CFM
110V/220V



UTC705

TUBING CUTTER FOR
COPPER, BRASS AND
ALUMINUM TUBING 1/4" TO
2-3/4"



HVP12

VACUUM PUMP 12 CFM
110V/220V



HVP8

VACUUM PUMP 8 CFM
110V/220V



KCHPT

PREMIUM PORTABLE OUTFIT



UVP1.5-110

VACUUM PUMP 1.5 CFM
110V



USRS220

ELECTRONIC REFRIGERANT
SCALE



UNIWELD PRODUCTS INC
ESTABLISHED IN 1949

Uniweld Products, Inc. is a U.S. manufacturing company headquartered in Fort Lauderdale, Florida. Established in 1949 on farmland in the Dania Beach area, the company has grown and expanded into one of the major manufacturers in the welding, HVAC/R (Heating, Ventilation, Air-Conditioning and Refrigeration), plumbing, and alloys markets.

David Pearl, Sr., founder and Chairman of the Board, has maintained the concept of the family-owned business throughout the company's history. Uniweld has always operated on a "family" concept and this has filtered down to each employee. Mr. Pearl's sons, David S. Pearl II and Douglas B. Pearl, have worked in the business for more than 30 years, and are fully familiar with the operations of the company, and today run the company together as President and Executive Vice President respectively.

Today, Uniweld's headquarters houses some of the latest state-of-the-art manufacturing equipment. Through engineering improvements and advanced research and development, the company has been able to make its equipment safer for the environment. Uniweld has won the prestigious Broward County Emerald Environmental Award twice and has been Broward County's Environmental Business of the Year.

Uniweld's product line includes U.S. made welding, cutting, brazing and heating outfits, refrigeration tools, vacuum and charging hoses, welding, brazing and cutting tips, accessories, pressure gauges and alloys. Uniweld operates and maintains distribution facilities in Florida, Texas, California, Ontario, and Saskatoon, and has sales offices in South America and the Middle East. Uniweld takes pride in its manufacturing excellence, product innovation, financial stability, community, and genuine concern for its customers and the environment throughout the world.

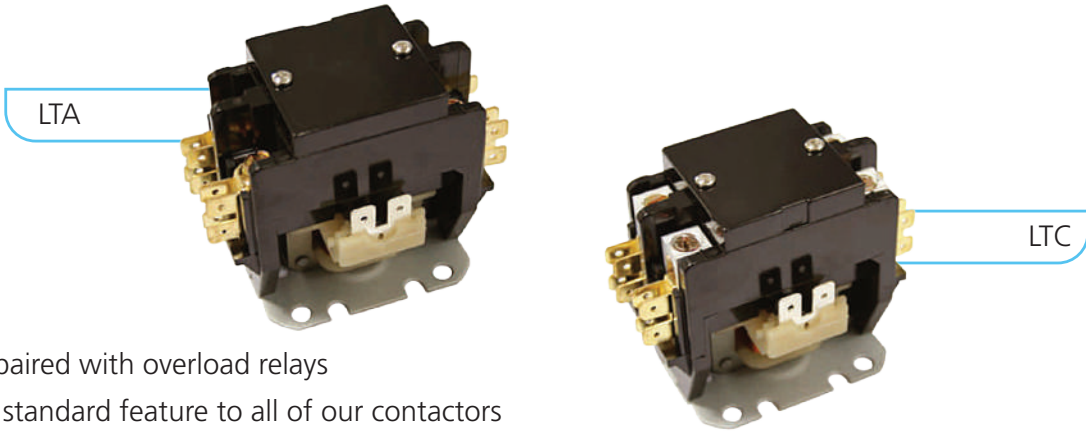


CONTACTORS

CONTACTORS 2 POLES

FEATURES:

- › For industrial motor control
- › 4-Pole contactors should be paired with overload relays
- › Covers can be provided as a standard feature to all of our contactors
- › UL and Cul Approved



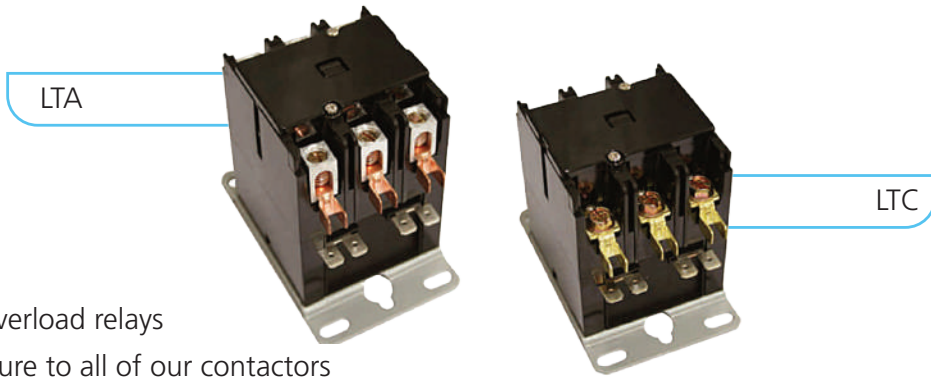
| Part No. | Poles | Full Load Amp (FLA) | Locked Rotor Amps 240/480/600 | Resistive (AMP) | Coil Voltage |
|-----------|-------|---------------------|-------------------------------|-----------------|--------------|
| LTA-2S-30 | 2 | 30 | 180/150/120 | 40 | 24V |
| LTA-2S-40 | 2 | 40 | 240/200/160 | 50 | 24V |
| LTC-2S-30 | 2 | 30 | 180/150/120 | 40 | 208/240V |
| LTC-2S-40 | 2 | 40 | 240/200/160 | 50 | 208/240V |



CONTACTORS 3 POLES

FEATURES:

- › For industrial motor control
- › 4-Pole contactors should be paired with overload relays
- › Covers can be provided as a standard feature to all of our contactors
- › UL and Cul Approved



| Part No. | Poles | Full Load Amp (FLA) | Locked Rotor Amps 240/480/600 | Resistive (AMP) | Coil Voltage |
|-----------|-------|---------------------|-------------------------------|-----------------|--------------|
| LTA-3S-30 | 3 | 30 | 180/150/120 | 40 | 24V |
| LTA-3S-40 | 3 | 40 | 240/200/160 | 50 | 24V |
| LTB-3S-40 | 3 | 40 | 240/200/160 | 50 | 120V |
| LTB-3S-30 | 3 | 30 | 180/150/120 | 40 | 120V |
| LTC-3S-30 | 3 | 30 | 180/150/120 | 40 | 208/240V |
| LTC-3S-40 | 3 | 40 | 240/200/160 | 50 | 208/240V |

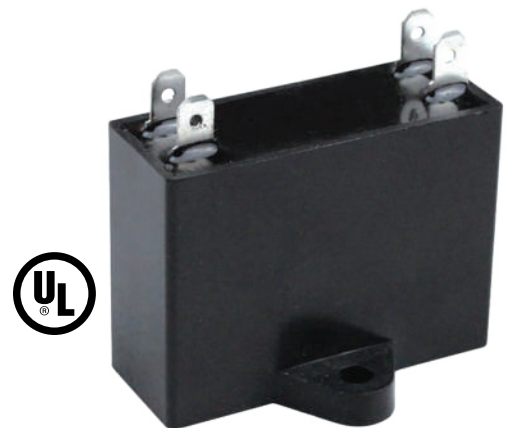


RUN CAPACITORS CBB61 SERIES

FEATURES:

- › Low dissipation,
- › High insulation resistance
- › Good self-healing character
- › Steady electricity performance
- › Anti-striking current
- › Strong over-carrying capacity
- › UL and Cul Approved

| Part No. | Capacitance (µF) | Rated Voltage | Dimension L*B*H in (mm) |
|----------|------------------|---------------|---------------------------|
| CB6110L | 1 | 450V | 0.55*1.10*1.46 (14*28*37) |
| CB6115L | 1.5 | 450V | 0.55*1.10*1.46 (14*28*37) |
| CB6120L | 2 | 450V | 0.71*1.18*1.46 (18*30*37) |
| CB6125L | 2.5 | 450V | 0.87*1.34*1.46 (22*34*37) |
| CB6130L | 3 | 450V | 0.87*1.34*1.46 (22*34*37) |
| CB6135L | 3.5 | 450V | 0.87*1.34*1.46 (22*34*37) |
| CB6140L | 4 | 450V | 0.87*1.34*1.46 (22*34*37) |
| CB6150L | 5 | 450V | 0.98*1.50*1.85 (26*38*47) |
| CB6160L | 6 | 450V | 0.98*1.50*1.85 (26*38*47) |



RUN CAPACITORS CBB65 SERIES

FEATURES:

- › Capacitor is Round shape
- › Capacitor is UL Listed
- › Filled with non-PCB oil
- › Made on non metalized film
- › Comes with metal cases
- › Includes four blades, quick connect insulated terminals
- › UL and Cul Approved



| Part No. | Capacitance(µF) | Rated Voltage | Dimension D*H in(mm) |
|----------|-----------------|---------------|----------------------|
| 44R200 | 20 | 440V | 1.97*2.56(50*65) |
| 44R250 | 25 | 440V | 1.97*2.95(50*75) |
| 44R300 | 30 | 440V | 1.97*3.35(50*85) |
| 44R350 | 35 | 440V | 1.97*3.54(50*90) |
| 44R400 | 40 | 440V | 1.97*4.33(50*110) |
| 44R450 | 45 | 440V | 2.36*3.94(60*100) |
| 44R500 | 50 | 440V | 2.36*3.94(60*100) |
| 44R550 | 55 | 440V | 2.36*4.92(60*125) |
| 44R600 | 60 | 440V | 2.36*4.33(60*110) |

AUXILIARY SWITCHES



| Part. No | Furnas | Description | Contactor F.L.A. |
|--------------|-------------|-------------|------------------|
| LTDPYSPDT | 49D36098001 | SPDT | 30-60 |
| LTDPY1NO/1NC | 49ACR6 | 1NO/1NC | 30-60 |

PRESSURE SWITCHES

FEATURES:

- › SPST Switch
- › 1/4" female SAE mounting
- › Automatic reset
- › Temper proof
- › 24V, 120V, 250VAC 50 - 60Hz, 6RLA, 36LRA
- › Low pressure switch - open on pressure drop, closes on pressure rise
- › High pressure switch - open on pressure rise, closes on pressure drop
- › UL Approved



| Part No. | Application | Settings (PSI) | | Tolerance (PSI) | |
|-----------|-------------------------------|----------------|-------|-----------------|-------|
| | | Open | Close | Open | Close |
| HPS400300 | High Pressure Automatic Reset | 400 | 300 | +/-15 | +/-15 |
| LPS4080 | Low Pressure Automatic Reset | 40 | 80 | +/-5 | +/-5 |

LIQUID LINE FILTER DRIERS

FEATURES:

- › The automatic compressed device make it possible to automatically fill in the worn molecules
- › High moisture and acid removal capacity
- › Motion of pads will not cause vibration
- › Drying and filtering effect of combining
- › Filtration: 20 microns
- › Corrosion resistant epoxy powder paint finish, salt spray test above 500 hours
- › UL Certified

APLICACIONES

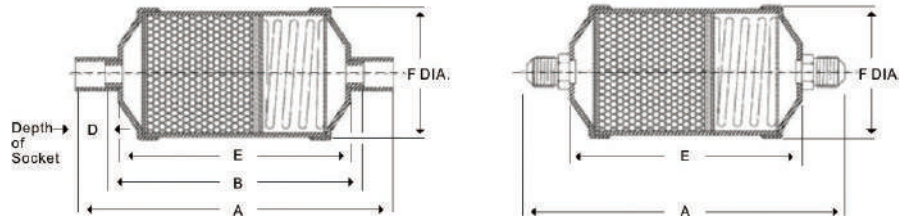
For a variety of refrigerant R12, R134a, R22, R404A, R407C, R410A, R500, R502, R507

| Part No. | Conection Size(IN) | | Liquid Low Capacity (Tons) | | | | | | Dimensions (IN) | | | | |
|----------|--------------------|-----|----------------------------|------|-----------|-------|------------|-------|-----------------|------|------|------|------|
| | ODF | SAE | R134a | R12 | R22/R410a | R407a | R404a/R507 | R502a | A | B | D | E | F |
| SEK-032 | | 1/4 | 1.61 | 2.09 | 2.21 | 2.12 | 1.45 | 1.45 | 4.13 | | | 2.36 | 1.69 |
| SEK-032S | 1/4 | | 2.21 | 2.72 | 2.88 | 2.88 | 1.98 | 1.98 | 3.78 | 2.56 | 0.61 | | |
| SEK-033 | | 3/8 | 2.51 | 3.01 | 3.32 | 3.22 | 2.22 | 2.12 | 4.53 | | | | |
| SEK-033S | 3/8 | | 2.51 | 3.01 | 3.32 | 3.22 | 2.22 | 2.12 | 3.86 | 2.6 | 0.63 | | |
| SEK-052 | | 1/4 | 1.72 | 2.12 | 2.32 | 2.22 | 1.52 | 1.52 | 4.86 | | | 3.13 | |
| SEK-052S | 1/4 | | 2.72 | 3.32 | 3.62 | 3.52 | 2.42 | 2.31 | 4.55 | 3.33 | 0.61 | | |
| SEK-053 | | 3/8 | 2.91 | 3.53 | 3.85 | 3.69 | 2.54 | 2.54 | 5.3 | | | | |
| SEK-053S | 3/8 | | 3.62 | 4.41 | 4.78 | 4.68 | 3.23 | 3.13 | 4.63 | 3.37 | 0.63 | | |
| SEK-082 | | 1/4 | 1.89 | 2.31 | 2.28 | 2.45 | 1.69 | 1.58 | 5.63 | | | 3.86 | |
| SEK-082S | 1/4 | | 2.55 | 3.12 | 3.46 | 3.34 | 2.23 | 2.23 | 5.28 | 4.06 | 0.61 | | |
| SEK-083 | | 3/8 | 3.33 | 4.01 | 4.35 | 4.36 | 2.94 | 2.84 | 6.02 | | | | |
| SEK-083S | 3/8 | | 3.76 | 4.56 | 4.88 | 4.78 | 3.29 | 3.19 | 5.35 | 4.09 | 0.63 | | |
| SEK-084 | | 1/2 | 5.56 | 6.75 | 7.32 | 7.13 | 4.96 | 4.76 | 6.18 | | | 2.5 | |
| SEK-084S | 1/2 | | 5.88 | 7.12 | 7.74 | 7.55 | 5.12 | 5.07 | 5.42 | 4.17 | 0.62 | | |
| SEK-162 | | 1/4 | 1.98 | 2.36 | 2.57 | 2.44 | 1.72 | 1.63 | 6.56 | 5.25 | | | |
| SEK-162S | 1/4 | | 2.55 | 3.12 | 3.45 | 3.32 | 2.19 | 2.19 | 6.19 | | | | |
| SEK-163 | | 3/8 | 3.19 | 3.88 | 4.25 | 4.11 | 2.78 | 2.71 | 7.01 | | | | |
| SEK-163S | 3/8 | | 3.61 | 4.41 | 4.79 | 4.77 | 3.16 | 3.13 | 6.17 | 5.08 | 0.54 | | |



LIQUID LINE FILTER DRIERS

DIAGRAM



| Part No. | Conection Size(IN) | | Liquid Low Capacity (Tons) | | | | | | Dimensions (IN) | | | | | |
|----------|--------------------|-----|----------------------------|-------|-----------|-------|------------|-------|-----------------|-------|------|-------|-----|--|
| | ODF | SAE | R134a | R12 | R22/R410a | R407a | R404a/R507 | R502a | A | B | D | E | F | |
| SEK-164 | | 1/2 | 5.88 | 7.14 | 7.81 | 7.77 | 5.23 | 5.12 | 7.17 | | | 4.84 | 2.5 | |
| SEK-164S | 1/2 | | 7.1 | 8.5 | 9.22 | 9.01 | 6.21 | 6.02 | 6.23 | 5.16 | 0.54 | | | |
| SEK-165 | | 5/8 | 8.02 | 9.71 | 10.45 | 10.32 | 7.01 | 6.82 | 7.6 | | | | | |
| SEK-165S | 5/8 | | 8.32 | 10.12 | 10.94 | 10.77 | 7.32 | 7.12 | 6.42 | 5.24 | 0.59 | | | |
| SEK-167S | 7/8 | | 12.78 | 15.56 | 16.87 | 16.54 | 11.26 | 10.92 | 7.05 | 5.24 | 0.91 | | | |
| SEK-303 | | 3/8 | 3.61 | 4.34 | 4.71 | 4.61 | 3.16 | 3.11 | 9.51 | | | 7.34 | 3 | |
| SEK-303S | 3/8 | | 5.23 | 6.36 | 6.87 | 6.78 | 4.63 | 4.45 | 8.84 | 7.58 | 0.63 | | | |
| SEK-304 | | 1/2 | 6.64 | 8.13 | 8.89 | 8.64 | 5.92 | 5.71 | 9.67 | | | | | |
| SEK-304S | 1/2 | | 8.78 | 10.62 | 11.52 | 11.36 | 7.74 | 7.53 | 9 | 7.66 | 0.67 | | | |
| SEK-305 | | 5/8 | 8.78 | 10.69 | 11.56 | 11.35 | 7.74 | 7.54 | 10.1 | | | | | |
| SEK-305S | 5/8 | | 10.32 | 12.51 | 13.52 | 13.33 | 9.12 | 8.84 | 9.23 | 7.74 | 0.75 | | | |
| SEK-306 | | 3/4 | | | | | | | 10.45 | | | | | |
| SEK-306S | 3/4 | | 12.12 | 14.84 | 16.06 | 15.75 | 10.71 | 10.44 | 9.31 | 7.74 | 0.79 | | | |
| SEK-307S | 7/8 | | 13.84 | 16.84 | 18.23 | 19.72 | 12.23 | 11.84 | 9.78 | 7.74 | 1.02 | | | |
| SEK-309S | 1-1/8 | | 16.12 | 19.63 | 21.25 | 20.84 | 14.21 | 13.84 | 10 | 7.89 | 1.06 | | | |
| SEK-413 | | 3/8 | 3.59 | 4.39 | 4.75 | 4.65 | 3.16 | 3.09 | 9.87 | | | 7.71 | 3.5 | |
| SEK-413S | 3/8 | | | | | | | | 9.2 | 7.94 | 0.63 | | | |
| SEK-414 | | 1/2 | 8.55 | 10.41 | 11.32 | 11.15 | 7.51 | 7.31 | 10.03 | | | | | |
| SEK-414S | 1/2 | | 8.98 | 10.85 | 11.74 | 11.52 | 7.84 | 7.61 | 9.36 | 7.94 | 0.71 | | | |
| SEK-415 | | 5/8 | 9.95 | 12.06 | 13.05 | 12.84 | 8.74 | 8.54 | 10.46 | | | | | |
| SEK-415S | 5/8 | | 13.98 | 17.02 | 18.41 | 18.18 | 12.3 | 12 | 9.28 | 7.94 | 0.67 | | | |
| SEK-417S | 7/8 | | 16.66 | 20.35 | 22.01 | 21.6 | 14.78 | 14.35 | 9.91 | 8.02 | 0.94 | | | |
| SEK-419S | 1-1/8 | | 22.75 | 27.78 | 30.25 | 29.41 | 20.14 | 19.51 | 10.37 | 8.02 | 1.17 | | | |
| SEK-757S | 7/8 | | 18.25 | 22.22 | 24.15 | 23.65 | 16.15 | 15.62 | 15.46 | 13.65 | 0.91 | 13.26 | | |
| SEK-759S | 1-1/8 | | 26.8 | 32.87 | 35.41 | 34.84 | 23.7 | 23.01 | 15.92 | 13.65 | 1.14 | | | |

SFK SERIE TWO WAY HEAT PUMP DRIER FILTER FILTER DRIERS

REMARK:

- › 1: Capacity to work status: liquid refrigerant temperature $t_c=30^{\circ}\text{C}$, saturated evaporation temperature $=-15^{\circ}\text{C}$, the pressure drop $\Delta p = 0.07 \text{ bar}$
- › It's not recommended used when pressure drop Δp over than 0.14bar
- › UL Certified

| Part No. | Conection Size(IN) | | | | | Dimensions (MM) | | | |
|----------|--------------------|-----|------|-------|-------|-----------------|-----|------|-----|
| | ODF | SAE | R22 | R410A | R407C | A | B | D | L |
| SFK-083S | 3/8 | | 17,8 | 17,8 | 17,4 | 19 | 100 | 63,5 | 138 |
| SFK-084S | 1/2 | | 23,6 | 23,6 | 23,2 | 20 | 100 | 63,5 | 140 |
| SFK-085S | 5/8 | | 28,5 | 28,5 | 27,8 | 24 | 100 | 63,5 | 148 |
| SFK-163S | 3/8 | | 18,3 | 18,3 | 17,9 | 19 | 110 | 76 | 148 |
| SFK-164S | 1/2 | | 28,5 | 28,5 | 27,8 | 20 | 110 | 76 | 150 |
| SFK-165S | 5/8 | | 30,6 | 30,6 | 29,9 | 24 | 110 | 76 | 158 |
| SFK-167S | 7/8 | | 40,2 | 40,2 | 39,6 | 28,5 | 110 | 76 | 167 |





NU-BRITE

4291-08 1 gallon bottle

A non-acid, alkaline-based product for cleaning and brightening air cooled condensers. It is formulated with the best available foaming detergents and chelants to quickly penetrate and dissolve greasy dirt and grime and foam it right out of the coil. The safer alternative to acids. Nu-Brite 4X is a new concentrate version available in a ready-to-use quart bottle. One concentrate quart equals one gallon traditional Nu-Brite (at 4:1 dilution use).



EVAP POW'R

4168-08 1 gallon bottle

Evap Pow'r is a "no-rinse" product formulated for cleaning indoor evaporator coils. The green-colored, slightly alkaline liquid is metal-safe and therefore will not harm the coil's metal surfaces when left in contact with them even in a no-rinse application. It cleans and emulsifies the most stubborn soils and deposits, and is biodegradable as well as USDA-Authorized.



TRI-POW'R® HD

4371-88 1 gallon bottle

Tri-Pow'r HD is perfect for cleaning air-cooled condensers, evaporator coils, permanent filters, fan blades, motors and other general cleaning needs. Tri-Pow'r HD is a heavy duty alkaline cleaner that is very unique when compared to other similar alkaline coil cleaners. It's based upon positive emulsion technology which is the most effective technology used for removing grease and grime.





EVAP-FRESH™ NO RINSE

4166-08 1 gallon bottle

Evap-Fresh No Rinse is a ready-to-use, non-abrasive, one-step cleaner and disinfectant for evaporator coils in small air conditioners, commercial air handling equipment, HVAC cooling coils and refrigeration equipment. It is the first product of its kind in the industry to receive EPA registration for such claims.

- Cleans and deodorizes in one easy step.
- EPA registered for the HVAC application.
- Ready-to-use disinfectant formula.
- No rinsing required.
- Eliminates odors.
- Cuts dirt and grime.



BIO-FRESH CD®

4126-38 1 gallon bottle

Bio-Fresh cd is a ready-to-use bacteriostat, fungistat and deodorizer based upon chlorine dioxide technology. It is recommended for control of bacteria, mold, mildew, fungi and yeast in IAQ applications. Its EPA registration includes application in HVACR ventilating equipment, including coils, condensate pans, filters and duct-work.

- A concentrated ready-to-use bacteriostat that is a fungistat and deodorant.
- EPA registered for application in HVACR systems No. 9804-3-65516.
- Can be sprayed in occupied areas.
- Kills odors and controls bacteria.
- Eliminates odors where they exist.



SPRAY NINE

61110 1 gallon bottle

Spray Nine digs out tough grease, grime, and other stubborn soils with "spray on, wipe off" ease from stainless steel, plastic, glazed tile, rubber, vinyl, fiberglass sinks, glazed porcelain, formica, and other hard surfaces.

- Tough task cleaner.
- Broad spectrum disinfectant.
- EPA - Registered to kill harmful germs. (Like HIV-1, Influenza, H1N1, Staphylococcus Aureus, Salmonella, Choleraesuis and E. Coli, in 45 Seconds)
- Prevent cross contamination.
- USDA Authorized.



DURACOIL

4083-90 11 ounce can

DuraCoil is a specially formulated coil and surface protectant for HVACR components. The product is an aerosol based, air-dry phenolic brown colored coating designed to extend the life of the coil or other system component in a corrosive environment. The coating is field proven – used successfully by OEMs for many years - but now available through Nu-Calgon as DuraCoil for field service when durable protective coil treatment is required to extend service life.

- For coils in coastal regions, or in industrial or agricultural settings.
- Durable, OEM-approved Heresite® coating.
- Protects coils from corrosion.
- DuraCoil is a brown-colored coating.
- Great to repair an OEM coil coating.
- Protects refrigeration coils against food acids.
- Fast, air-dry formula bonds to all metals.



CAL-BLUE PLUS

4182-08 1 gallon bottle

Cal-Blue products are the complete gas leak detector. Not only do they detect the smallest leak, they also provides other significant benefits. The high viscosity formula provides long lasting bubbles, and enables the product to remain in contact with the applied surface for an extended period of time, thereby allowing the smallest of leaks to be detected. It is also non-corrosive to metal, and this is a significant feature as it helps to maintain the integrity of piping, tubing and fittings.

- Formulación de alta viscosidad para mejorar el tiempo de contacto.
- Apto para todos los refrigerantes, gas natural y oxígeno.
- Puede utilizarse a temperaturas de hasta 225oF.
- No afecta a las luces ultravioletas.
- Burbujas de larga duración.
- No corrosivo para los metales.



SEAL-IT™

4050-48 Systems 1.5 to 5 tons

Seatl-It™ is a new quality refrigerant leak sealant from Nu-Calgon, the most trusted brand in leak sealant technology. Its easy injection method makes pumping down the unit a thing of the past.

- Powerful sealing strength.
- Installs in seconds.
- Creates a permanent seal
- Works with all refrigerants.
- For residential or light commercial systems 1.5 to 5 tons.



GEL TABS

4185-95 1.5 ton Tabs - (2 per bag)

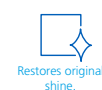
Gel Tabs are formulated with a breakthrough gel locking technology for treating air conditioning drain pans and lines. Keeps the drain pan from clogging and eliminates foul and musty odors.



A/C SHINE

61118 12 Oz.

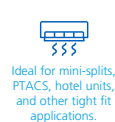
A/C Shine is specially formulated to clean and protect the painted metal surfaces of outdoor A/C condensing units. A/C Shine cleans dirt and stains, restores, shine, and leaves a protective finish against harmful outdoor elements like UV rays. It sprays on and wipes off quickly and easily without water. To provide the perfect finish, use A/C Shine on every service call.



MINIFRESH®

61065 MiniFresh

ClenAir MiniFresh is not a perfume mask or cover-up. The unique ClenAir formula molecularly reacts with the airborne odor-causing compounds and eliminates them and other indoor pollutants leaving clean, fresh, air behind. The MiniFresh makes it easy to remove odors and improve the indoor air quality in the entire home or building by treating the air through the HVAC system.





PHASE III REFRIGERATION OIL ACID TEST KIT

4320-W8 1 box

Phase III is an inexpensive, disposable, extremely accurate and universal acid test kit.

The concentrate of acid in refrigeration oil is expressed as an acid number in mg of KOH per gram of oil (milligrams of potassium hydroxide per gram of oil). The acid number is a measure of the amount of hydroxide solution needed to neutralize the acid in the oil. The more acid there is in the oil, the more potassium hydroxide is needed to neutralize it and, so, the higher the acid number.



Mineral oils.



Alkylbenzene oils like Zerol.



EMKARATE RL and Copeland polyol esters.



Polyvinyl ether (PVE) lubricants.



NU-CALGON QUALITY PRODUCTS FOR AIR CONDITIONING

Nu-Calgon markets and distributes a complete line of specialty chemical products for the HVACR aftermarket. These include coil cleaners, leak sealants, air purifiers and refrigeration oils, as well as products for water treatment, ice machine maintenance, and other specialty applications. These products are marketed to air conditioning, heating, refrigeration and plumbing wholesalers, as well as food service/restaurant suppliers and OEMs.

Nu-Calgon, formerly part of Calgon Corporation and Calgon Vestal Laboratories, has been a leader in the HVACR aftermarket for the past 70 years. It is strategically headquartered in St. Louis, Missouri, where it distributes its products from a 100,000 square-foot warehouse.

Nu-Calgon has 32 factory sales professionals located across the United States and Canada, providing many years of sales and product experience. A customer-oriented automated telephone system accepts orders 24 hours a day, 7 days a week via fax and email, and it can also connect you to the voice mailbox of all Nu-Calgon personnel.

A state-of-the-art order entry system accesses the Nu-Calgon inventory at the centralized distribution center, enabling prompt, accurate order processing and complete order shipment within 24 hours.



MICROPURE®

14013 MicroPure Unit, MX4 9" 24V

Breathe better

The MicroPure® Total Home Active Air Purifier uses a unique new indoor air quality process to naturally produce airborne scrubbers that actively seek out and destroy indoor pollutants in the air, on surfaces, and wherever the air goes.

Specifications

| Models | Dimensions | Weight | Output | Sizing |
|--------|-------------|--------|--------|---------|
| 9" | 6×11×6 inch | 3 lb | 13.3 w | 3-5 TON |

Mounting plate dimensions

8×8 inch

Electrical

The MicroPure® air purifier is available in 24V 50/60Hz and 120V/230V 50/60Hz (auto-switching) power supply models. The unit uses a detachable 9.8 ft power cord.

Warranty details

2 Year UV Lamp, 4 Year MX4 Core, 5 Year Power Supply



The ETL mark, short for Edison Testing Laboratories, is, in part, an equipment safety certification program operated by the laboratory, Intertek. Intertek is one of the few NRTLs (Nationally Recognized Testing Laboratories), a third-party testing program which is overseen by OSHA. The ETL Mark includes a number of different variations that are designed to fit within the safety and/or sanitation standards of the product, including the operating and purchasing regions.



LIGHTSTICK UV

19300 Lightstick Unit - 15"

New Lightstick Unit - 15" Germicidal UV Lamp FOR AIR HANDLER UNITS AND FAN COILS



Works in conjunction with your air filter 24/7 to disinfect cooling coils, drain pans, and duct surfaces.



Fights mold and bacteria growth for optimal coil purification.



24V power module.



Expanded range ballast operates over a range of 20V to 32V and offers 3000V surge protection.



Direct Connect™ custom design allows lamp to be installed directly in A-coil delta plate for optimal UV exposure.



Custom bracket offer remote mount capability.



Quick disconnect lamp connection enables easy lamp replacement.



Purifi compatible for real time lamp status alerts (Patent Pending).

Specifications

| Dimensions | Weight | Bracket |
|---------------------|--------|-------------------|
| 3.16×4.75×1.75 inch | 2 lb | 2.25×3.5×3.5 inch |

29.233

15"
Length

9,000
Hour life

Electrical

24V (Expanded Range Ballast: 20V-32V), 50/60HZ, 1.4A, 3000V Surge Protection, 3-FT Power Cord, 4-FT Lamp Cord.

Warranty details

4-year on power module / 1-year on lamp



Ozone free



Water resistant



The ETL mark, short for Edison Testing Laboratories, is, in part, an equipment safety certification program operated by the laboratory, Intertek. Intertek is one of the few NRTLs (Nationally Recognized Testing Laboratories), a third-party testing program which is overseen by OSHA. The ETL Mark includes a number of different variations that are designed to fit within the safety and/or sanitation standards of the product, including the operating and purchasing regions.

MINISTICK UV

19401 Mini Stick UV For mini splits units up to 3 tons

Mini-Stick UV, 230V for mini splis units



- Germ Reducing UV Light for Ductless Mini-Split Units.
- 9" long by 3/8" diameter miniature shielded UV lamps.
- Small enough to fit in tight ductless Mini-Split applications.
- High ambient temperature operation.
- Comprehensive HALT testing for improved reliability.
- Professionally engineered injection molded thermoplastic co-polymer high strength ballast housing.
- 2 year bulb warranty and 2 year ballast warranty.
- Proprietary clockable lamp mount design for optimizing UV intensity.
- Quick release lamp connectors for ease of lamp replacement.
- High strength alloy mounting hardware.
- High strength / Heavy duty lamp shield to protect lamp from breakage.

Specifications

| Ballast | Weight | Bracket |
|-----------------------|-------------------------|-------------------|
| 4×1×1.5 inch | 0.5 lb | 2.25×3.5×3.5 inch |
| Lamp | | |
| 9" | 0.4" | |
| <small>Length</small> | <small>Diameter</small> | |
| Electrical | | |
| 120 or 230 VAC | | |

Warranty details

2-year on power module / 2-year on lamp

- Ozone free
- Water resistant



The ETL mark, short for Edison Testing Laboratories, is, in part, an equipment safety certification program operated by the laboratory, Intertek. Intertek is one of the few NRTLs (Nationally Recognized Testing Laboratories), a third-party testing program which is overseen by OSHA. The ETL Mark includes a number of different variations that are designed to fit within the safety and/or sanitation standards of the product, including the operating and purchasing regions.



MINI UV LED

TUV-MINI-LED

Mini UV LED is the first-of-its-kind UV light LED system for mini-splits and similar limited space applications. Like all A/C systems, mini-splits are prone to internal mold growth and microbial contamination, particularly on and near the blower wheel. The LED light strip in Mini UV LED is designed to sterilize surfaces while having no impact on plastic materials.

- Fits mini-split & ceiling cassette A/C systems.
- UV LED spectrum is safe for eyes & plastics.
- Replaceable 40" Adhesive LED strip.
- 50,000+ hour expected LED life.
- LED strip trimmable in 4" increments.
- 120-277 VAC power supply.
- 5 year warranty on all parts.

Specifications

| LED strip | Weight | LED life |
|------------------------------------|--------|------------------|
| 40×0.375 inch | 1 lb | 50,000 Hour life |
| Electrical | | |
| 120, 230, 277 V ~ 0.47 A, 50/60 Hz | | |
| PF ≥ 0.9, THD ≤ 20% | | |

Warranty details

All parts 5 years

Kit Includes

40" LED strip, LED driver, #8 pan screws, panduit straps, warning stickers, manual

AAF INTERNATIONAL

Daikin together with our counterpart AAF Flanders, who is the leading provider of air filtration solutions that helps companies in creating superior air quality; offer a comprehensive lineup of air filters and clean room equipment crucial to various industries including semiconductors, precision equipment, pharmaceuticals, healthcare, food, and building HVAC systems.

We offer innovative air filtration solutions designed to remove and control airborne particles and gaseous contaminants.



PLEATED FILTERS

PREpleat® M13 / PREpleat M11 SC /
MEGApleat® M9 / PerfectPleat® SCM8

Typical Applications

- Commercial Buildings
- Food and Beverage
- Healthcare
- Agriculture & Tobacco
- Pharmaceutical
- Hospitality
- Schools and Universities
- Museums & Historic Storage



BAG FILTERS

DriPak® 2000

Typical Applications

- Automotive
- Commercial Buildings
- Data Centers
- Food and Beverage
- Hospitality
- Industrial
- Schools and Universities

AAF INTERNATIONAL



BOX FILTERS

VariCel® / VariCel II MH / BioCel® VXL

Typical Applications

- Health care
- Commercial Buildings
- Hospitality
- Pharmaceutical
- Food and Beverage
- Agriculture & Tobacco
- Data Centers
- Schools and Universities
- Museums & Historic Storage



HEPA - ULPA FILTERS

AstroCel® I / AstroCel® II / AstroCel® III

Typical Applications

- Commercial Buildings
- Data Centers
- Food and Beverage
- Healthcare
- Industrial
- Microelectronics
- Pharmaceutical

RATCHET WRENCH



| Part No. | OD Tubing |
|----------|-----------------------|
| LT-122 | 1/4"、3/16"、5/16"、3/8" |

| Part No. | OD Tubing |
|----------|-----------------------|
| LT-123 | 1/4"、3/16"、9/16"、1/2" |

SWAGING PUNCH



| Part No. | Description |
|----------|-------------|
| LT-193 | 1/4" ~ 5/8" |

TURNING REAMER



| Part No. | Description |
|----------|----------------|
| LT-210 | Turning Reamer |

CURVING PLIERS



| Part No. | Description |
|----------|------------------------------|
| LT-999N | 1/4" ~ 7/8" With tube cutter |

SPRING BENDER



| Part No. | OD Tubing |
|----------|--------------------------------|
| LT-102 | 1/4" 5/16" 3/8" 1/2" 5/8" 3/4" |

INSULATION FOAM TAPE



| Part No. | Width | Length | Thickness |
|----------|-------|--------|-----------|
| RI-350 | 50mm | 10m | 3mm |

COIL FIN STRAIGHTENER



| Part No. | Spacing per inch |
|----------|------------------|
| LT-352 | Fin Straightner |

90 TUBE BENDER 3-IN-1



Prevents pipe sweat. Can also be used to reduce heat loss on hot pipes below 160°F. Easily cuts into pieces and molds around fittings and valves. Adheres to clean metal surfaces and to itself.

| Part No. | O.D. Tubing |
|----------|-------------|
| LT-368 | 1/4" ~3/8" |

45°COMMON EXTRUSION TYPE FLARING TOOL KITS



| Part No. | Description |
|----------|--------------------------------------------------------------------|
| LT-1226A | LT-195A(Flaring tool 3/16" ~5/8")<-274(Tube cutter 1/8" ~1-1/8") |

45°TRADITIONAL EXTRUSION TYPE FLARING TOOL KITS



| Part No. | Description |
|----------|----------------------------------------------------------------------------------------|
| LT-275A | For 1/8" ~3/4" 5Swage adapters 3-in-1(3/16", 1/4", 3/8")~3/4" The 45°cone for flare |



| Part No. | Description |
|----------|------------------------------------------------------------------------------------------------------------------------------|
| LT-278A | LT-275 45° Flaring Tools&5 Swage Adapters LT-274 Tube cutter 1/8" ~1-1/8" LT-122 Ratchet Wrench(1/4", 3/8", 3/16", 5/16") |

| Part No. | Description |
|----------|-------------|
| LT-8030 | Tool sets |

| Part No. | Description |
|----------|-------------|
| LT-8032 | Tool sets |

45°ECCENTRIC CONE TYPE FLARING TOOLS



| Part No. | Description |
|----------|------------------------------|
| ZR-808-F | For 1/8" ~3/4" LT-274<-208 |

TUBE CUTTERS



| Part No. | Description | O.D. Size |
|----------|-------------|--------------|
| LT-274 | Tube Cutter | 1/8" ~1-1/8" |



| Part No. | Description | O.D. Size |
|----------|-------------|---------------|
| LT-206 | Tube Cutter | 3/16" ~2-5/8" |



| Part No. | Description | O.D. Size |
|----------|-------------|--------------|
| LT-312 | Tube Cutter | 1/4" ~2-5/8" |



| Part No. | Description | O.D. Size |
|----------|------------------------|--------------|
| CT-105 | Heavy-Duty Tube Cutter | 1/8" ~1-1/4" |

MINI SPLIT WALL MOUNTING BRACKET SETS

FEATURES:

- › Made of pressed Steel
- › Painted with highly weatherproof polyester powder
- › Fast and easy for installation
- › All the screws supplied are galvanized
- › Pre-assembled

| Model | Description | Thickness (mm) | Range |
|----------|-------------|----------------|---------------------|
| RBA-450 | 800X450X450 | 2.0 | 9,000 - 36,000 BTU |
| BRA-2001 | 790x390x450 | 2.0 | 9,000 - 18,000 BTU |
| BRA-2002 | 790x390x550 | 2.0 | 18,000 - 36,000 BTU |
| BRA-100 | 390x450 | 1.5 | 9,000 - 12,000 BTU |



DIGITAL THERMOMETER

FEATURES:

- › Internal panel
- › Battery front replacement
- › Product size: 62.5 x 29.5 x 19.0 mm
- › Installing size: 59.5 x 25.0 mm
- › Temperature range: -50°C to 70°C

| Part No. | Battery Replacement | Temperature Range |
|----------|---------------------------------|-------------------|
| TPM-10F | Two button batteries(LR44,1.5V) | -50°C~70°C |



| Part No. | Battery Replacement | Temperature Range |
|----------|--------------------------|-------------------|
| ET7620 | button battery 1.5V LR44 | -40°C~200°C |



| Part No. | Battery Replacement | Temperature Range |
|----------|---------------------|-------------------|
| PT100 | No battery | 0~220°F |



| Part No. | Battery Replacement | Temperature Range |
|----------|---------------------|-------------------|
| HT390 | 2*1.5V AAA battery | -30°C~70°C |



| Part No. | Battery Replacement | Temperature Range |
|----------|---------------------|-------------------|
| HT550 | 9V battery | -50°C~550°C |



MULTIMETER MODEL NO. DT-266

FEATURES:

- > DCV
- > ACV
- > ACA
- > OHM
- > Temperature
- > Diode, continuity test



MULTIMETER MODEL NO. MT-87

FEATURES:

- > Model No.
- > Features:
- > DCV
- > ACV
- > ACA
- > OHM
- > Diode, continuity test
- > Data hold



MULTIMETER MODEL NO. CXL9905

FEATURES:

- > DC Voltage
- > AC Voltage
- > DC Current
- > AC Current
- > Resistance
- > Capacitance
- > Power



MULTIMETER MODEL NO. HK3366

FEATURES:

- > DCV
- > ACV
- > ACA
- > Resistance
- > Diode
- > Auto Power Off
- > Non-Contact Voltage Detector
- > Continuity buzzer
- > Data Hold
- > Work Light
- > Low Battery Indication



CLAMP METER MODEL NO. VC3267B

FEATURES:

- › Auto-Ranging
- › ACA.AC.V.AC.V
- › Frequency
- › Capacitor
- › Temperature
- › Resistance
- › Continuty buzzer
- › Diode
- › Data hold
- › Low battery indication
- › "Func" and "Rel" Fuction



ANENOMETER MODEL NO. HT816

FEATURES:

- › High precision, Reliable
- › Display both velocity and temperature of the wind
- › Portable and easy operation
- › LCD Black light
- › Auto turn off if no further operation for 14 minutes
- › MAX/ AVERAGE/ CURRET reading allows the user to analyze quickly



MULTIMETER MODEL NO. CXL9905

FEATURES:

- › DC Voltage
- › AC Voltage
- › DC Current
- › AC Current
- › Resistance
- › Capacitance
- › Power



COUPLER

QUICK COUPLER

| Part No. | Description |
|------------|-------------|
| 400QC17L/H | 1/4" 1/2" |





PIPE INSULATION TUBE

| 3/8" Wall - 6 Foot Lengths (unslit) / Core used on tubes 2-5/8" ID and above | | | | | | | | |
|------------------------------------------------------------------------------|--------------------------------------------------|------------------------|-------------------|-------------------------|---------------------------------------|--------------------------------|-------------|------------|
| Part Number | Description | Linear Feet Per Carton | Pieces Per Carton | Insulation Nominal I.D. | Copper Tube Size (Nom. I.D. Plumbing) | Copper Tube Size (O.D. HVAC/R) | IPS Nominal | Weight Lbs |
| 6RX038028 | INSUL-TUBE, 1/4" X 3/8" W X 72", 630/105 PIECES | 630 | 105 | 1/4" | 1/8" | 1/4" | -- | 18,0 |
| 6RX038038 | INSUL-TUBE, 3/8" X 3/8" W X 72", 612/102 PIECES | 612 | 102 | 3/8" | 1/4" | 3/8" | 1/8" | 19,0 |
| 6RX038048 | INSUL-TUBE, 1/2" X 3/8" W X 72", 432/72 PIECES | 432 | 72 | 1/2" | 3/8" | 1/2" | 1/4" | 27,0 |
| 6RX038058 | INSUL-TUBE, 5/8" X 3/8" W X 72", 378/63 PIECES | 378 | 63 | 5/8" | 1/2" | 5/8" | 3/8" | 28,0 |
| 6RX038068 | INSUL-TUBE, 3/4" X 3/8" W X 72", 342/57 PIECES | 342 | 57 | 3/4" | 5/8" | 3/4" | -- | 30,0 |
| 6RX038078 | INSUL-TUBE, 7/8" X 3/8" W X 72", 288/48 PIECES | 288 | 48 | 7/8" | 3/4" | 7/8" | 1/2" | 15,0 |
| 6RX038118 | INSUL-TUBE, 1-1/8" X 3/8" W X 72", 216/36 PIECES | 216 | 36 | 1-1/8" | 1" | 1-1/8" | 3/4" | 25,0 |
| 6RX038138 | INSUL-TUBE, 1-3/8" X 3/8" W X 72", 168/28 PIECES | 168 | 28 | 1-3/8" | 1-1/4" | 1-3/8" | 1" | 16,0 |
| 6RX038158 | INSUL-TUBE, 1-5/8" X 3/8" W X 72", 150/25 PIECES | 150 | 25 | 1-5/8" | 1-1/2" | 1-5/8" | 1-1/4" | 26,0 |
| 6RX038200 | INSUL-TUBE, 2" X 3/8" W X 72", 120/20 PIECES | 120 | 20 | 2" | -- | -- | 1-1/2" | 25,0 |
| 6RX038218 | INSUL-TUBE, 2-1/8" X 3/8" W X 72", 96/16 PIECES | 96 | 16 | 2-1/8" | 2" | 2-1/8" | -- | 14,0 |

| 1/2" Wall - 6 Foot Lengths (unslit) / Core used on tubes 2-3/8" ID and above | | | | | | | | |
|------------------------------------------------------------------------------|--------------------------------------------------|------------------------|-------------------|-------------------------|---------------------------------------|--------------------------------|-------------|------------|
| Part Number | Description | Linear Feet Per Carton | Pieces Per Carton | Insulation Nominal I.D. | Copper Tube Size (Nom. I.D. Plumbing) | Copper Tube Size (O.D. HVAC/R) | IPS Nominal | Weight Lbs |
| 6RX048028 | INSUL-TUBE, 1/4" X 1/2" W X 72", 510/85 PIECES | 510 | 85 | 1/4" | 1/8" | 1/4" | -- | 20,0 |
| 6RX048038 | INSUL-TUBE, 3/8" X 1/2" W X 72", 456/76 PIECES | 456 | 76 | 3/8" | 1/4" | 3/8" | 1/8" | 21,0 |
| 6RX048048 | INSUL-TUBE, 1/2" X 1/2" W X 72", 360/60 PIECES | 360 | 60 | 1/2" | 3/8" | 1/2" | 1/4" | 29,0 |
| 6RX048058 | INSUL-TUBE, 5/8" X 1/2" W X 72", 324/54 PIECES | 324 | 54 | 5/8" | 1/2" | 5/8" | 3/8" | 30,0 |
| 6RX048068 | INSUL-TUBE, 3/4" X 1/2" W X 72", 270/45 PIECES | 270 | 45 | 3/4" | 5/8" | 3/4" | -- | 19,0 |
| 6RX048078 | INSUL-TUBE, 7/8" X 1/2" W X 72", 228/38 PIECES | 228 | 38 | 7/8" | 3/4" | 7/8" | 1/2" | 19,0 |
| 6RX048118 | INSUL-TUBE, 1-1/8" X 1/2" W X 72", 156/26 PIECES | 156 | 26 | 1-1/8" | 1" | 1-1/8" | 3/4" | 17,0 |
| 6RX048138 | INSUL-TUBE, 1-3/8" X 1/2" W X 72", 120/20 PIECES | 120 | 20 | 1-3/8" | 1-1/4" | 1-3/8" | 1" | 24,0 |
| 6RX048158 | INSUL-TUBE, 1-5/8" X 1/2" W X 72", 114/19 PIECES | 114 | 19 | 1-5/8" | 1-1/2" | 1-5/8" | 1-1/4" | 16,0 |
| 6RX048200 | INSUL-TUBE, 2" X 1/2" W X 72", 114/19 PIECES | 114 | 19 | 2" | -- | -- | 1-1/2" | 27,0 |
| 6RX048218 | INSUL-TUBE, 2-1/8" X 1/2" W X 72", 102/17 PIECES | 102 | 17 | 2-1/8" | 2" | 2-1/8" | -- | 26,0 |

| 3/4" Wall - 6 Foot Lengths (unslit) / Core used on tubes 3-1/2" ID and above | | | | | | | | |
|------------------------------------------------------------------------------|-------------------------------------------------|------------------------|-------------------|-------------------------|---------------------------------------|--------------------------------|-------------|------------|
| Part Number | Description | Linear Feet Per Carton | Pieces Per Carton | Insulation Nominal I.D. | Copper Tube Size (Nom. I.D. Plumbing) | Copper Tube Size (O.D. HVAC/R) | IPS Nominal | Weight Lbs |
| 6RX068028 | INSUL-TUBE, 1/4" X 3/4" W X 72", 240/40 PIECES | 240 | 40 | 1/4" | 1/8" | 1/4" | -- | 16,0 |
| 6RX068038 | INSUL-TUBE, 3/8" X 3/4" W X 72", 228/38 PIECES | 228 | 38 | 3/8" | 1/4" | 3/8" | 1/8" | 18,0 |
| 6RX068048 | INSUL-TUBE, 1/2" X 3/4" W X 72", 228/38 PIECES | 228 | 38 | 1/2" | 3/8" | 1/2" | 1/4" | 20,0 |
| 6RX068058 | INSUL-TUBE, 5/8" X 3/4" W X 72", 180/30 PIECES | 180 | 30 | 5/8" | 1/2" | 5/8" | 3/8" | 19,0 |
| 6RX068068 | INSUL-TUBE, 3/4" X 3/4" W X 72", 144/24 PIECES | 144 | 24 | 3/4" | 5/8" | 3/4" | -- | 18,0 |
| 6RX068078 | INSUL-TUBE, 7/8" X 3/4" W X 72", 126/21 PIECES | 126 | 21 | 7/8" | 3/4" | 7/8" | 1/2" | 17,0 |
| 6RX068118 | INSUL-TUBE, 1-1/8" X 3/4" W X 72", 90/15 PIECES | 90 | 15 | 1-1/8" | 1" | 1-1/8" | 3/4" | 17,0 |
| 6RX068138 | INSUL-TUBE, 1-3/8" X 3/4" W X 72", 78/13 PIECES | 78 | 13 | 1-3/8" | 1-1/4" | 1-3/8" | 1" | 16,0 |
| 6RX068158 | INSUL-TUBE, 1-5/8" X 3/4" W X 72", 72/12 PIECES | 72 | 12 | 1-5/8" | 1-1/2" | 1-5/8" | 1-1/4" | 28,0 |
| 6RX068200 | INSUL-TUBE, 2" X 3/4" W X 72", 66/11 PIECES | 66 | 11 | 2" | -- | -- | 1-1/2" | 24,0 |
| 6RX068218 | INSUL-TUBE, 2-1/8" X 3/4" W X 72", 60/10 PIECES | 60 | 10 | 2-1/8" | 2" | 2-1/8" | -- | 17,0 |

KIT FOR ... MODEL QD-U10A

FEATURES:

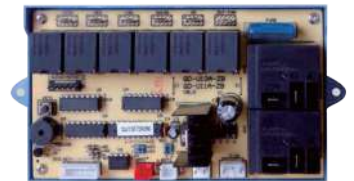
- › High quality, full function. It is suitable for both split and cabinet conditioner. In control and display panel, you can see all state and control all function. And the manipulation is so simple as that the child and old man can control the conditioner without any difficulty.
- › LED digital display panel
- › Full function
- › Convenient and simple



KIT FOR ... MODEL QD-U11A

FEATURES:

- › Compared with QD-U10A, it has added Auto Restart Function
- › High quality, full function. It is suitable for both split and cabinet conditioner. In control and display panel, you can see all state and control all function. And the manipulation is so simple as that the child and old man can control the conditioner without any difficulty.



KIT FOR ... MODEL QD-U12A

FEATURES:

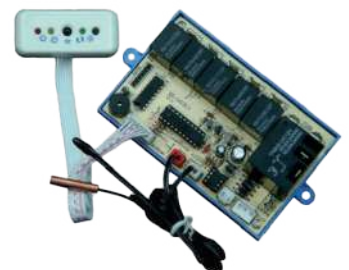
- › LCD background light display panel
- › Anions fresh air function
- › Other features same as QD-U11A
- › Auxiliary heating function
- › Power protection



KIT FOR ... MODEL QD-U03C+

FEATURES:

- › 5 working mode
- › Accurate & stable temperature control
- › Auto-restart function
- › Timer on/off
- › Defrost automatically
- › Outdoor fan is controlled independently
- › Compressor project timer timer for its run and stop
- › Prevent cold wind in heating mode



KIT FOR ON/OFF MINISPLIT SYSTEMS MODEL MCRC-001

FEATURES:

- › Temperature control
- › Time control
- › 3 fan speeds
- › Cold-Warm control
- › Automatic inspection
- › Forced emergency start
- › Delay compressor for protection
- › Power input: 220-240, 50/60Hz
- › New with Auto Restart



KIT FOR INVERTER MINISPLIT SYSTEMS MODEL MCRC-002

FEATURES:

- › Temperature control
- › Time control
- › 3 fan speeds
- › Cold-Warm control
- › Wide-Force control
- › Power input: 220-240, 50/60Hz



DUAL VOLTAGE KIT FOR FAN COILS AND FLOOR CEILING UNITS MODEL MCRC-001

FEATURES:

- › High quality, full function
- › It's suitable for both split and cabinet air conditioner
- › Remote control and display panel show all state and control all functions
- › Power input: 100-240, 50/60Hz. Can be used in 115V minisplits
- › Delay compressor for protection
- › 3 fan speeds
- › Heater function
- › Swing function
- › Cold-Warm control



2 STAGE VACUUM PUMP

SPECS:

- › Ultimate Vacuum 15 microns
- › Motor: 1/3 Hp
- › LCD backlight
- › Speed: 1,720 Rpm
- › Net Weight: 8.8 Kg

| Part No. | Description |
|----------|----------------------------------------------|
| 2LT-6.0D | 110V/60Hz(7CFM) or 220V/50Hz(6CFM); 3/4HP |

| Part No. | Description |
|-----------|----------------------------------------------|
| 2LT-10.0D | 110V/60Hz(12CFM) or 220V/50Hz(10CFM); 1HP |

| Part No. | Description | Power |
|------------|------------------------------|----------------------|
| 2LVP-1.5MP | 2.5 CFM, 2 stage Vacuum Pump | 115-120V/1Ph/50-60Hz |



SCALE

SPECS:

- › Has memory function
- › Designed within CE guideline



| Part No. | Capacity | Accuracy | Resolution | Plate Form Size | Weight | Power | Readout | Operating Temp | Storage Temperature Range | Auto Off |
|----------|--------------|--------------------|---------------------|-----------------|--------|-------------------------------------|----------------|----------------------|---------------------------|----------|
| WPS100 | 100kg/220lbs | +/-0.5% of reading | +/-0.2oz/0.01lbs/5g | 23*23CM | 3.3KG | 2pcs 9V batteries include (60hours) | Imprial/Metric | 32°F~122°F (0~50 °C) | -4°F~158°F (-20~70°C) | 15 min |

SCALE

SPECS:

- › Schrader valve prevents back flow through solenoid
- › Has memory function
- › Designed within CE guideline



| Part No. | Capacity | Accuracy | Resolution | Plate Form Size | Weight | Power | Readout | Operating Temp | Storage Temperature Range | Auto Off |
|----------|--------------|--------------------|---------------------|-----------------|--------|--------------------------------------|----------------|----------------------|---------------------------|----------|
| WPS100B | 100kg/220lbs | +/-0.5% of reading | +/-0.2oz/0.01lbs/5g | 23*23CM | 3.6KG | 2pcs 5AA batteries include (60hours) | Imprial/Metric | 32°F~122°F (0~50 °C) | -4°F~158°F (-20~70°C) | 15 min |

ELECTRONIC SCALE

SPECS:

- › Wireless Eletronic Refrigerant Charging Scale

| Part No. | Description | Power |
|----------|-------------|----------------|
| LMC-310 | 100kg/220lb | 5AAA batteries |



ACCESS VALVE

| Part No. | Description | Bag | Master box |
|----------|----------------------------------------------|-----|------------|
| AV04A07T | 1/4"OD*7CM, THICKNESS 0.5MM, VALVE BODY:23mm | 10 | 800 |

| Part No. | Description | Bag | Master box |
|----------|-------------|-----|------------|
| AV-14 | 1/4" Tubing | 50 | 500 |

| Part No. | Description | Bag | Master box |
|----------|--------------|-----|------------|
| AV-316 | 3/16" Tubing | 50 | 500 |



GRILLS AND DIFFUSERS

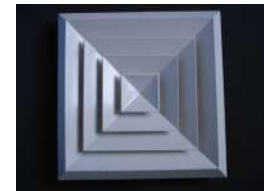
CEILING DIFFUSER DAMPER SQUARE

FEATURES:

- › Extrude aluminium construction
- › Electro-static powder coating finish with white paint, other colors available
- › Available in 1, 2, 3 and 4 ways

SPECS:

- › Material: Aluminum
- › Neck Size: W*H
- › Face Size: =Neck Size+3 1/4inch



| Model | CD-SA4B15+OBD | CD-SA4B35+OBD | CD-SA4B40+OBD |
|-------------|---------------------------|---------------------------|---------------------------|
| Description | NECK:15*15CM, WITH DAMPER | NECK:35*35CM, WITH DAMPER | NECK:40*40CM, WITH DAMPER |

AIR DIFFUSER DAMPER ROUND



| Model | CD-R150 | CD-R200 | CD-R250 | CD-R300 | CD-R350 |
|-------------|-------------------------------|-------------------------------|--------------------------------|--------------------------------|--------------------------------|
| Description | NECK:D=6", WITH DAMPER, ROUND | NECK:D=8", WITH DAMPER, ROUND | NECK:D=10", WITH DAMPER, ROUND | NECK:D=12", WITH DAMPER, ROUND | NECK:D=14", WITH DAMPER, ROUND |

REMOTE CONTROL UNIVERSAL MODEL NO. KT-N898

FEATURES:

- › 2000 in 1
- › Vacuum coating keys
- › LCD backlight
- › Thermometer function
- › Clock function
- › Patent of code input



AIRCONET

- > AC Smart Control allows to control your new or installed Minisplit wirelessly by simply using your iOS or Android smartphones.
- > Self-installed Energy Efficient Solution
- > Control Split or Window AirCon from anywhere in the world (via Wifi or cellular)



FEATURES:

- > 2-way communication (status feedback and sync with aircon's remote control)
- > Automatic aircon brand selection via aircon's remote control
- > Compatible with major brands with remote control
- > Plug and Play – no installation needed
- > Measure Room temperature via built-in temperature sensor NTC
- > Size 30x30x8mm
- > Voltage: 5VDC (Mini USB). 150mA Max
- > Power consumption: Less than 1 kWh/month
- > Fan: 3-speed fan control (automatically or manually) by App
- > Set Point Temperature Range: 16 ~ 32°C
- > IR distance: Max. 6 meters at line of sight
- > Indoor use only
- > wifi: 802.11b/g/n 2.4GHz c
- > Certification: FCC, CE, IC, EMC, LVD
- > Warranty: 1 year limited

MINI ORANGE ASPEN

Fiabilidad y rendimiento sin igual.

- Caudal máx. 12 L/h
- Altura máx. recomendada 10 m (caudal 6 L/h)
- Nivel sonoro 21 dB(A) @ 1 m



| | |
|-----------------------------|--------------------------|
| kW máx de la unidad | 16 kW |
| Temperatura máxima del agua | 40°C / 104°F |
| Tubo de descarga | 6 mm de DI |
| Protección IP | IP21 |
| Interruptor de seguridad | 3,0A Normalmente cerrado |
| Protección térmica | ✓ |
| Completamente encapsulada | ✓ |
| Autocebante | ✓ |

| | |
|-------------------------|---------------------------|
| Datos basados en | @ 230 VAC 50Hz |
| Caudal máx. | 12 L/h |
| Altura máx. recomendada | 10 m |
| Altura máx. succión | 2 m |
| dB(A) | 21 |
| Fuente de alimentación | 230 V, 0,11A, 16W 50/60Hz |
| Nominal | No continuo |
| Clase | Dispositivo de Clase II |

MINI BLANC ASPEN

Características

- Rápida colocación
- Diseñada para instalarse debajo de las unidades minisplit de pared



| | |
|-----------------------------|--------------------------|
| kW má x de la unidad | 16 kW |
| Temperatura máxima del agua | 40°C / 104°F |
| Tubo de descarga | 6 mm de DI |
| Protección IP | IP21 |
| Interruptor de seguridad | 3,0A Normalmente cerrado |
| Protección térmica | ✓ |
| Completamente encapsulada | Partially |
| Autocebante | ✓ |

| | |
|-------------------------|-----------------------------|
| Datos basados en | @ 230 VAC 50Hz |
| Caudal máx. | 12 L/h |
| Altura máx. recomendada | 10 m |
| Capacidad del depósito | 0,24L |
| dB(A) | 21 |
| Fuente de alimentación | 230 V AC, 0,1A, 16W 50/60Hz |
| Nominal | No continuo |
| Clase | Dispositivo de Clase II |

GASES REFRIGERANTES



| Part No. | Description | Net Weight |
|-----------------|--------------------------|------------|
| REFR134A-13.6KG | REFRIGERANT R134A 13.6 | 13.6 KG |
| REFR404A-10.9KG | REFRIGERANT R404A 10.9 | 10.9 KG |
| REFR410A-11.3KG | REFRIGERANT R410A 11.6 | 11.6 KG |
| REFR507-11.3KG | REFRIGERANT R507 11.3 KG | 11.3 KG |
| REFR32-3KG | REFRIGERANT R32 3 KG | 3 KG |

Mini Aqua



Caudal máx
12 L/h



**Altura máx.
recomendada**
10 m (caudal 6 L/h)t



Nivel sonoro
21 dB(A) @ 1 m

La bomba de evacuación de condensado más pequeña del mercado, ¡diseñada para que quepa donde otras no pueden!

Max Hi-Flow



Caudal máx
550 L/h



**Altura máx.
recomendada**
5 m (flow rate 55 L/h)

La mejor bomba con depósito de su clase, Max Hi-Flow, continúa la tradición de Aspen Pumps de calidad de construcción y alto rendimiento. Con la calificación de 44 dB(A) más baja y la mejor Protección IP24 (contra salpicaduras) de cualquier bomba con depósito, la Max Hi-Flow es la bomba más silenciosa y segura de su clase.

Mini Tank



Caudal máx
35 L/h



**Altura máx.
recomendada**
15 m (caudal 10 L/h)

La nueva y mejorada bomba Mini Tank puede montarse en la pared, en el suelo, puede colocarse en bandeja de condensado o suspendida en una varilla roscada M8 / M10. Se trata de una bomba compacta con depósito multifuncional y potente gracias a su tecnología de pistón.



www.daikinlatam.com

WinasOne